

Materialprüfungsamt Nordrhein-Westfalen - 44285 Dortmund

DORMA Deutschland GmbH
DORMA Platz 1
58256 Ennepetal
Germany

Ihr Zeichen: PS
Ihre Nachricht vom : 08.12.2014
Unser Zeichen: 120001701.10-02
Durchwahl: +49 (0)231 4502 493
Direktfax: +49 (0)231 4502 586
E-Mail: meinks@mpanrw.de
Datum: 11.12.2014

Extension of validity of a test certificate.

Dear Ladies and Gentlemen,

concerning the results of the initial type test carried out with the controlled door closing device "DORMA BTS 84 EN 2/ EN 3/ EN 4" you applied for the extension of validity of test certificate no. 120001701.10-02.

The tests have been carried out on the base of the DIN EN 1154:1997-05 (see test report no. 120001701.10-01).

Today the DIN EN 1154: 2003-04 is valid.

The changes which have been made within the revision of this version of the DIN EN 1154 have no influence to the results and the classification of the door closer "DORMA BTS 84 EN 2/ EN 3/ EN 4".

You have also assured that the door closer was not modified since the initial type test.

Therefore the validity of the test certificate no. 120001701.10-02 is extended up to November, 1st 2019.

Best regards
By order



H. Jansen
Head of Test Lab



T. Meinks
Technischer Amtsinspektor

Test Certificate No. 120001701.10-02

Digital Version

Contracting Party

Dorma GmbH & Co. KG
 Breckerfelderstr. 42-48
 D-58256 Ennepetal

Assignment

Testing of controlled door closing devices (door closer) in accordance with DIN EN 1154: 1997-05 (Ref. No. EN 1154: 1996 D). The tests are to be including the additional requirements according to annex A of DIN EN 1154.

Description of Samples

7 * floor concealed door closer with hydraulic damping, second closing area from 20° to 0° with fixed size:
 „Dorma BTS 84 EN 2, EN 3 und EN 4“.
 The door closers are fixed to the door leaf as per Annex 1

Description of the Test and Test Results

See test report No. 120001701.10-01.

Evaluation of the Test Results

The door closer „Dorma BTS 84“ fulfils the requirements of the DIN EN 1154.
 Fixing corresponding with appendix 1.

It is classified as follows in accordance with sec. 4 of DIN EN 1154:

Dorma BTS 84 EN 2	3	8	2	0	1	4
Dorma BTS 84 EN 3	3	8	3	1	1	4
Dorma BTS 84 EN 4	3	8	4	1	1	4

Dortmund, November 11th 2004

By order




Thorsten Meinks
 Technischer Amtsinspektor

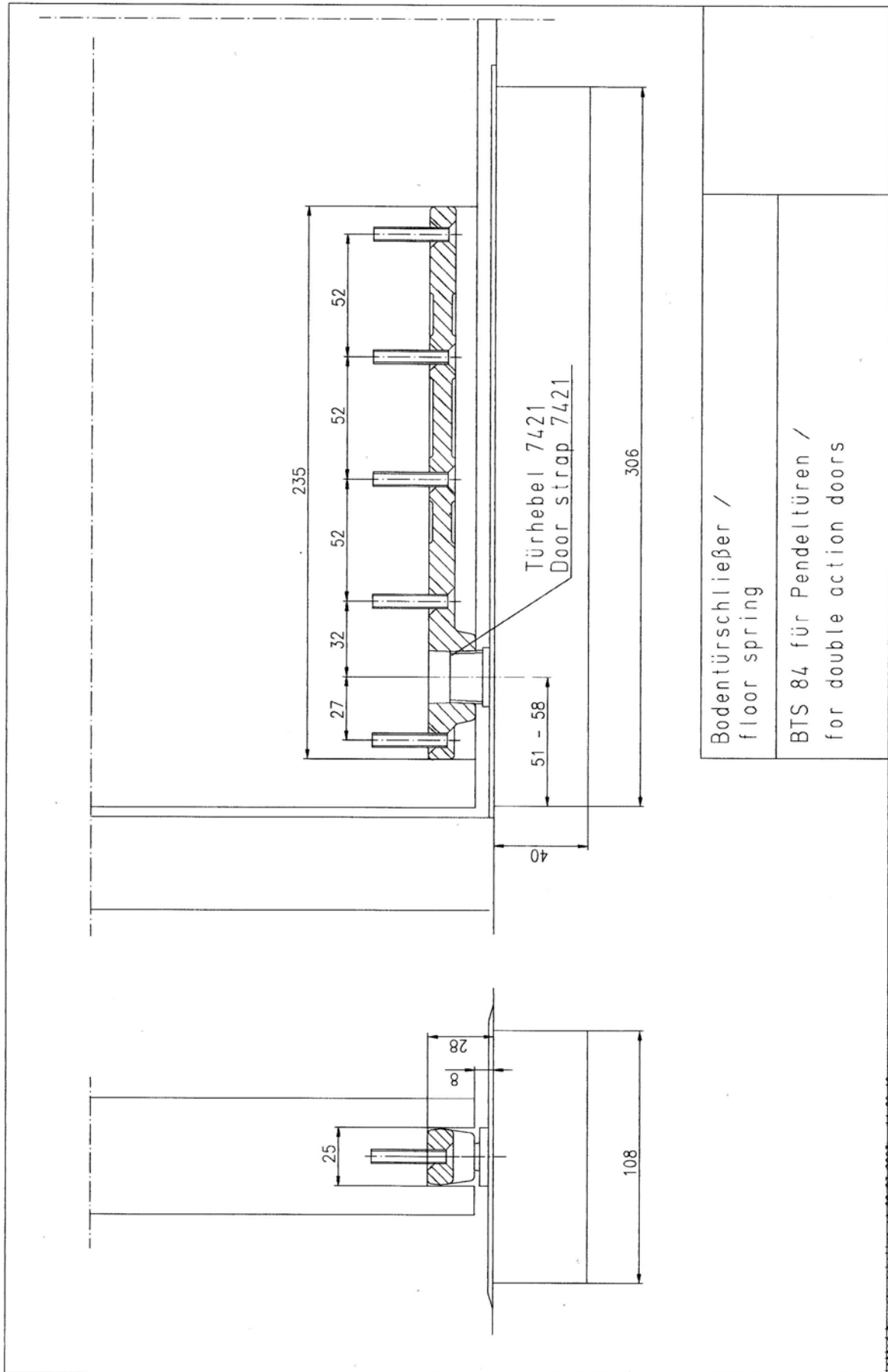
This is the English version of Prüfzeugnis Nr. 120001701.10-02.

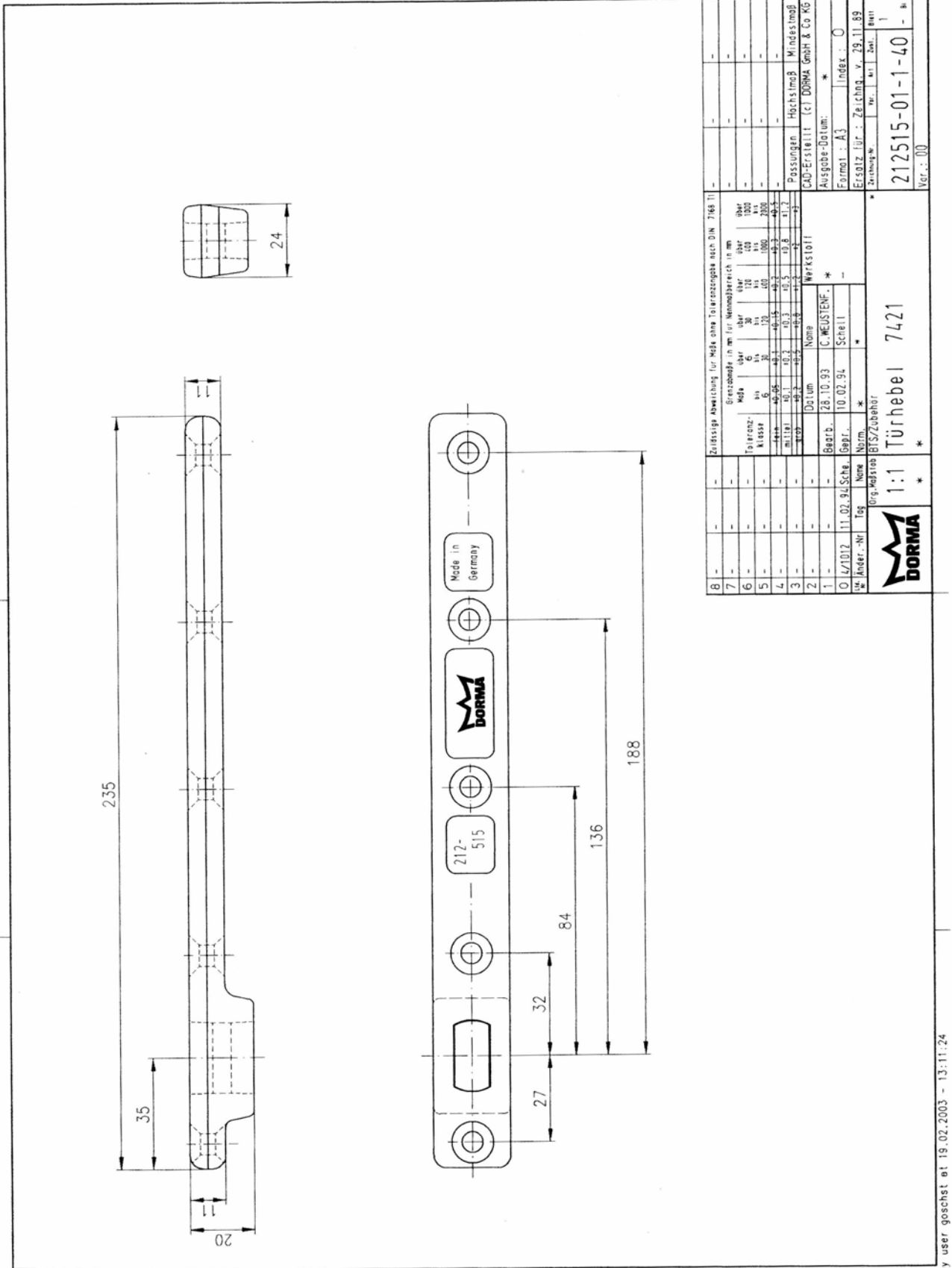
The original version is in German language. In case of any misunderstandings the German version is valid.

The validity of this certificate expires on November 1st 2009.

The results of the tests are exclusively in relation to the test piece indicated above. Test reports may without the consent of the MPA NRW only be published or reproduced in accordance with their unaltered form and content. The abbreviated reproduction of a test certificate is only permissible with the consent of the MPA NRW.

This test certificate comprises 1 page and 3 appendices.





Werteangabe sowie Verfertigung dieser Unterlage, Verwertung und Mitteilung ihres Inhalts nicht gestattet, soweit nicht ausdrücklich zugestanden. Zweckerhöhungen, Verstärkungen zu Schweißnähten, Alle Rechte für den Fall der Patentierung oder Gebrauchsmuster-Eintragung vorbehalten.

8	–	–	–	Zulässige Abweichung für Maße ohne Toleranzangabe nach DIN 7168 11	–	–	–	–	–
7	–	–	–	Grenzabgabe in mm für Nennmaßbereich in mm	–	–	–	–	–
6	–	–	–	Maße über 300	über	100	1000	–	–
5	–	–	–	Toleranzklasse	6	30	100	1000	2000
4	–	–	–	Maße bis 30	120	400	1000	2000	–
3	–	–	–	Maße bis 10	10	15	10	10	10
2	–	–	–	Maße bis 1	10	10	10	10	10
1	–	–	–	Maße bis 0,1	10	10	10	10	10
Werkstoff		C-MEISTENF.							
Name		Schnell							
Datum		28.10.93							
Bearb.		11.02.94							
Gepl.		10.02.94							
Norm		–							
Ander.-Nr.		–							
Top		–							
Bsp.-Maßstab		BIS/Zubehör							
Logo									
Verf.-Nr.		1:1 Türhebel 7421							
Index		A3							
Ersatz für		Zeichnung v. 29.11.89							
Zeichnung		212515-01-1-40							
Var.		00							